

NUPATH SCULPTURE COMPETITION

“NuPath Inc. has been a leader in the human services arena for more than 40 years, providing a network of creative day services and residential options for people living with developmental disabilities, autism spectrum disorders and acquired brain injury. The programs help people learn new skills, make and maintain meaningful, lasting relationships, pursue health and wellness through diet and regular exercise, take pride in their careers and accomplishments and explore the concepts of personal responsibility, service and belonging within their own communities.”

<http://nupathinc.org/>

147 New Boston Street,
Woburn, MA 01801
781-935-7057

Pionarch, LLC will be the liaison between NuPath and the competition entries. We are an architectural and interior design firm based in Topsfield, MA. Our focus is on providing customer satisfaction through new and innovative designs. The competition should follow the same idea of innovation through memorialization.

<http://www.pionarch.com/>

35 Main Street, Unit 118C,
Topsfield, MA 01984
978-887-2900

The competition will be focused on creating a sculpture or installation that would memorialize NuPath loved ones. The idea should be one that can be multiplied and scattered or patterned in the site design.

Please see the following supporting material:

- Site Plan
- Back Elevation
- Side Elevation
- 3D Renderings of Site Aspects that are in progress

Requirements:

- 3D Representation of your ideas.
- Description of your idea and how it relates to NuPath and memorializing someone
- General idea of how this would be constructed

This will lead to an opportunity to have their design built on the NuPath site!

Life's Journey with NuPath

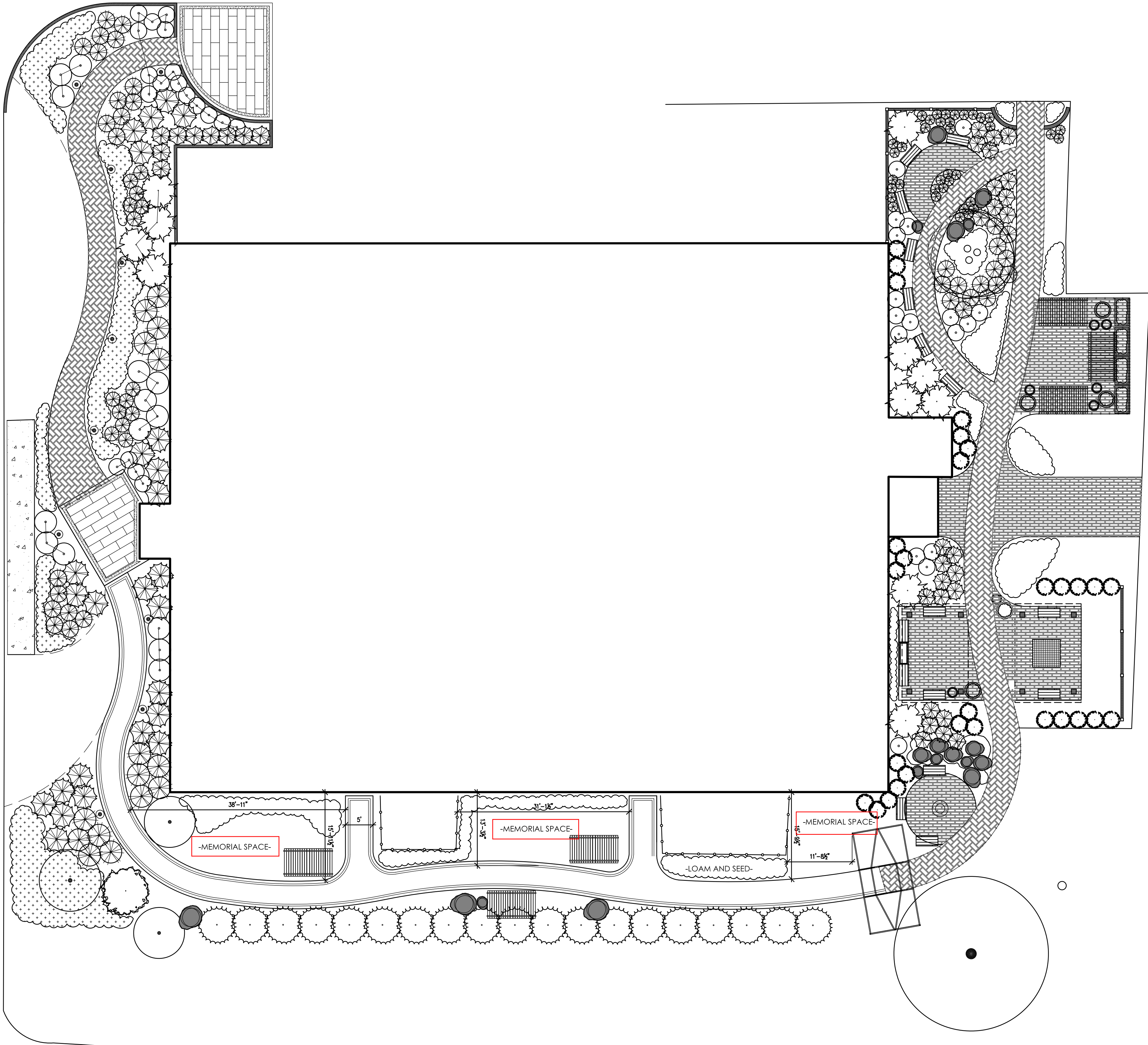
“Our goal is to provide support that feels right, makes sense. NuPath has been a source of hope and a partner in life for more than four decades – supporting thousands of people find the courage to dream big and accept the gift of high expectations.

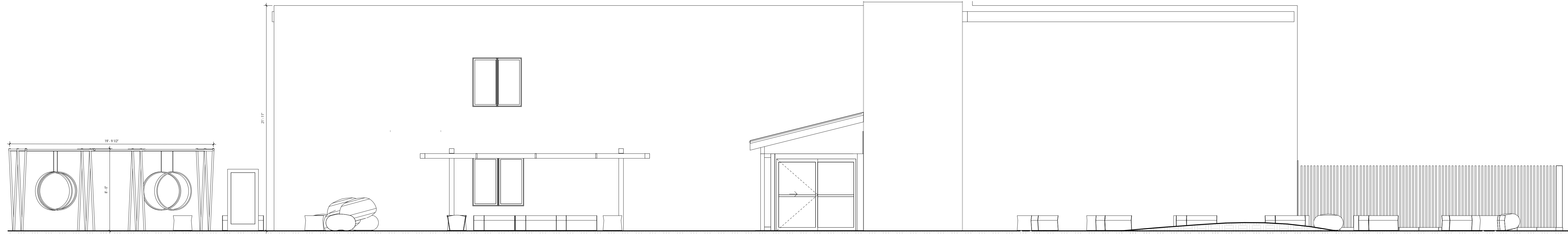
Our innovative programs provide education, coaching, opportunity and success. NuPath's strongest connection has always been to individual growth and to creating the space of possibility: for the men and women we support, our employees, our communities...for everyone whose path through life touches ours.”

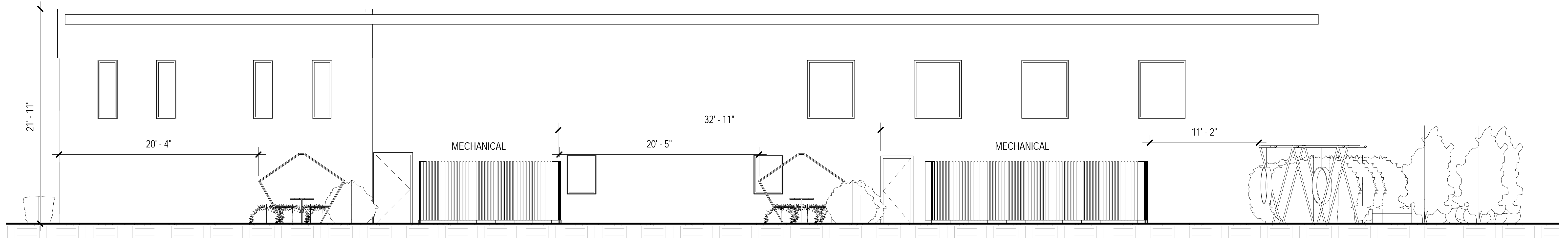
NuPath sees the opportunities for collaboration for students and designers, and NuPath. We would love to engage the designers in a potential competition project of creating sculptures to the name of those who were part of NuPath. The project is to design a single **sculpture or installation** that could

be dynamically multiplied on site. The outdoor space is located on the back green space of the building, located in 147 New Boston Street in Woburn, MA and it is currently being planned as the **Outdoor Sculpture Park**. With the innovative and creative ideas from students and designers, we can help memorialize people that were part of the NuPath family.

NuPath is a company that would like to build a relationship with the designing community. The prizes include a **\$1,000 award and a feature on NuPath's website**. The idea also can have the possibility of being built in later phases.













Today's Activities



Today's Activities
Bonfire at 6:00 PM!!