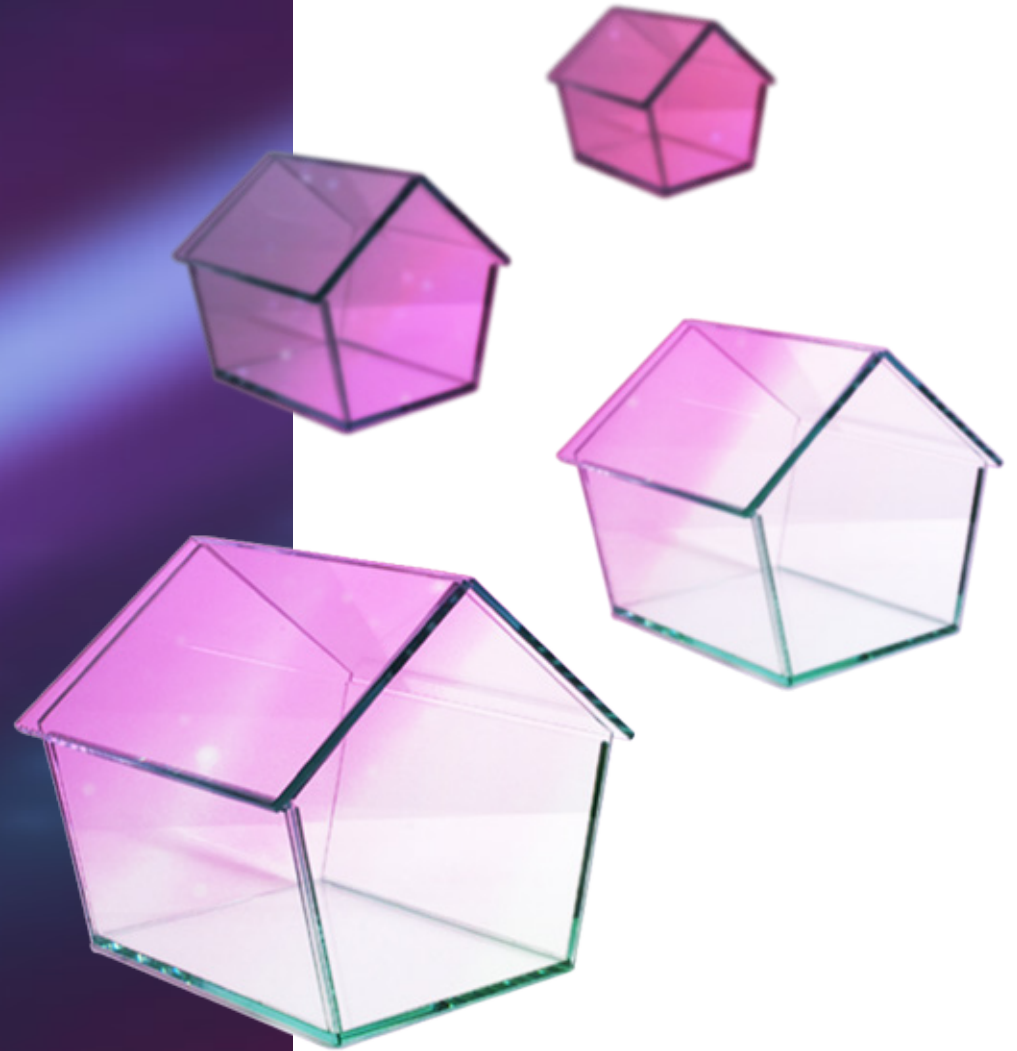


ARCHITECTURE COMPETITION

ICELAND NORTHERN LIGHTS ROOMS

COMPETITION CONDITIONS

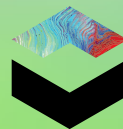


Bee Breeders Architecture Competition Organisers
have prepared this document for the
ICELAND NORTHERN LIGHTS ROOMS
architecture competition.

Full Competition Terms & Conditions:
[NORTHERNLIGHTSROOMS.beebreeders.com/terms](https://www.beebreeders.com/terms)

The concept and planning for this competition
have been developed solely by
Bee Breeders Architecture Competition Organisers.

© Bee Breeders
Architecture Competition Organisers
hello@beebreeders.com
[beebreeders.com](https://www.beebreeders.com)



CONTENTS

4	INTRODUCTION
5	ICELAND
7	ICELAND NATURE
8	THE COMPETITION
8	ICELAND NORTHERN LIGHTS ROOM
9	BUILDING PROGRAMME
10	PROJECT PROPOSAL REQUIREMENTS
11	THE COMPETITION SITE
14	PRIZES
15	COMPETITION SCHEDULE
15	REGISTRATION FEES
16	RECOMMENDED SUBMISSION CONTENT
16	PRESENTATION DELIVERABLES SET
16	SUBMISSION REQUIREMENTS
17	JURY & EVALUATION PROCESS
18	ELIGIBILITY
18	MEDIA PARTNERS
18	ARCHITECTURE STUDENTS
18	COMPETITION DOCUMENTATION

INTRODUCTION

Iceland has a vast, wild landscape, with some of the most unique and incredible natural views in the world.

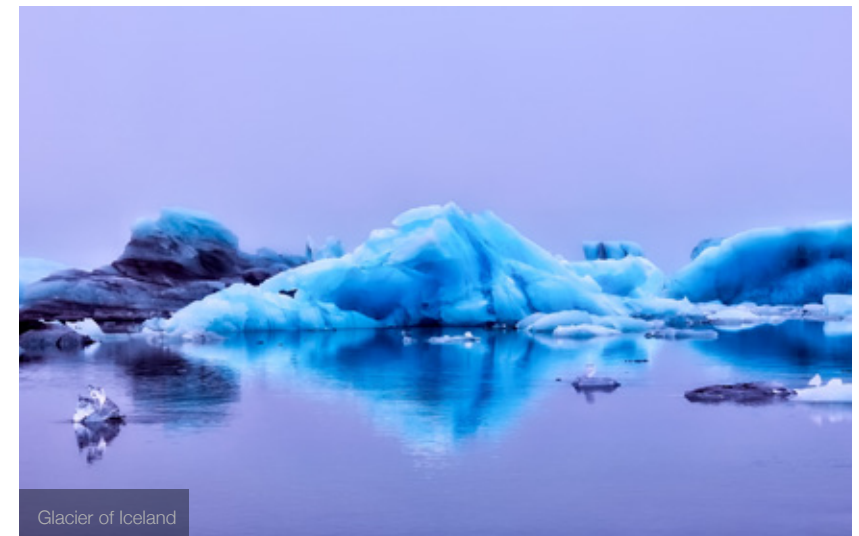
Appropriately known as the land of fire and ice, Iceland's volcanic fields blend seamlessly into gigantic glaciers and tumbling waterfalls. Iceland is also an ideal location to view the iconic Aurora Borealis, otherwise known as the Northern Lights.

For the Iceland Northern Lights Rooms architecture competition, participants are tasked with creating the concept for a guest house from which to view this breathtaking spectacle. The guest house would need to be able to permanently accommodate its hosts as well as provide welcoming temporary accommodation for guests.

ICELAND

Iceland is a Nordic island country, located in the North Atlantic Ocean. With a population of roughly 330,000, the 103,000 square kilometre island is the most sparsely populated country in Europe.

Iceland has a unique topography, in that it is both volcanically and geologically active; with its interior consisting of a plateau of sand and lava fields, mountains and glaciers. The combination of temperate and tundra makes for an exceedingly beautiful and contrasting landscape of fire and ice; hence its nickname, the land of fire and ice.





Iceland

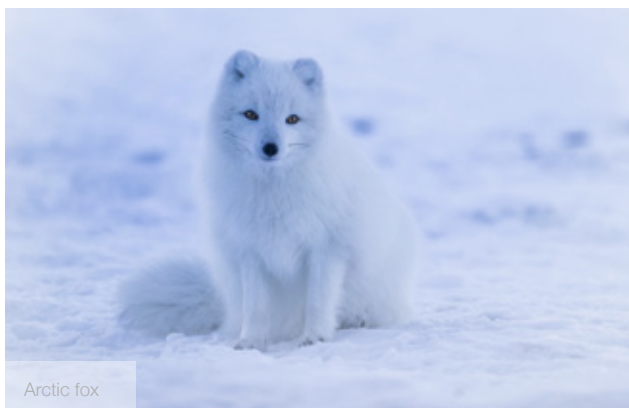
Originally said to have been first settled in 874 AD by Norwegian chieftain Ingólfr Arnarson, Iceland's population consists almost entirely of settlers from Norway and other Scandinavian countries. In the 13th century, Iceland came under the rule of Denmark, when the establishment of the Kalmar Union in 1397 united the kingdoms of Norway, Denmark and Sweden. Iceland remained a Danish colony until it achieved independence in 1918, and founded a republic in 1944,

Iceland has always relied heavily on its fishing and agriculture industries, and the industrialisation of said industries following World War II made Iceland one of the wealthiest and most developed nations in the world. However, the country was hit hard by the global financial crisis, and has only recently recovered, thanks in large part to the ever-growing popularity of international tourism.

ICELAND NATURE

Before the arrival of humans, Iceland was an extensively forested land. When humans began to settle permanently, massive deforestation devastated the country's forests. Deforestation, climatic deterioration, and overgrazing of livestock caused the topsoil to be eroded, making it impossible for delicate ecosystem to recover.

There is comparatively little wildlife in Iceland, with only one species - the Arctic fox - being indigenous to the island before the arrival of man. All other animal species were directly introduced by human settlers, including the Icelandic sheep, cattle, chickens, goats, the Icelandic horse, and the Icelandic Sheepdog, all of which are descendants of animals imported by Europeans. In addition to the Arctic fox, Iceland is now home to wild animals such as mink, mice, rats, rabbits, reindeer, and the occasional polar bears visiting from Greenland.



Arctic fox



Skogar Museum Iceland;

THE COMPETITION

ICELAND NORTHERN LIGHTS ROOMS

The main purpose of the Iceland Northern Lights Rooms are to function as a guest house, capable of accommodating up to 20 guests, as well as providing a permanent home for the hosts and their family.

Participants will need to design a range of distinct and separate guest bedrooms which range in size from single rooms to double rooms that can sleep up to four people. The guest rooms must be moveable; they have no permanent foundations and can be relocated as necessary.

The layout of each guest bedroom should be simple, providing guests with a bed and a skylight through which to enjoy watching the Aurora Borealis from their beds. Participants will also need to design a dining area that would be able to host and serve all the visitors at once, providing enough room and facilities (i.e. a kitchen and serving facilities) for up to five invited staff members as well the hosts.

The host private accommodation can be connected to the guest house facilities, or entirely separate, however there should be a clear and comfortable division between the two spaces. It should provide a bedroom, living room, bathroom and small kitchen.

Participants should also consider the landscape and additional features, such as a terrace with a roof for hosting summer events in the case of bad weather; as well as a barn for the 10 Icelandic horses owned by the host. The barn will only need to function as a shelter as Icelandic horses tend to live outdoors all year round.

BUILDING PROGRAMME

Participants must accommodate the following functions:

Guest Zone

- movable, detached guest bedrooms (different sizes)
- dining area
- kitchen
- sauna (optional)
- shower and WC

Private Zone

- bedroom
- living room
- bathroom
- small kitchen
- shower and WC

Additional features and facilities

- terrace
- barn for the horses
 - Must provide space for up to 10 horses. Each horse requires 2x3m² area

Service areas

- internal and external circulation spaces must be explained
- participants should include parking in their project strategy

The BUILDING PROGRAMME is flexible, open for modifications and improved development strategies.

PROJECT PROPOSAL REQUIREMENTS



Adaptable and moveable types of bedrooms



Able to provide comfortable shelter for several days to all occupants in all weather conditions



Cost-effective construction for remote, areas with no limited road access



Resistant to heat, cold, rain, snow, and wind



Environmentally responsible and energy efficient for providing bathing amenities



Able to generate its own power and provide safe drinking water



Low maintenance in terms of effort and costs



The project qualities listed above are minimum requirements; the competition brief is open to adaptation and improved development strategies.

THE COMPETITION SITE

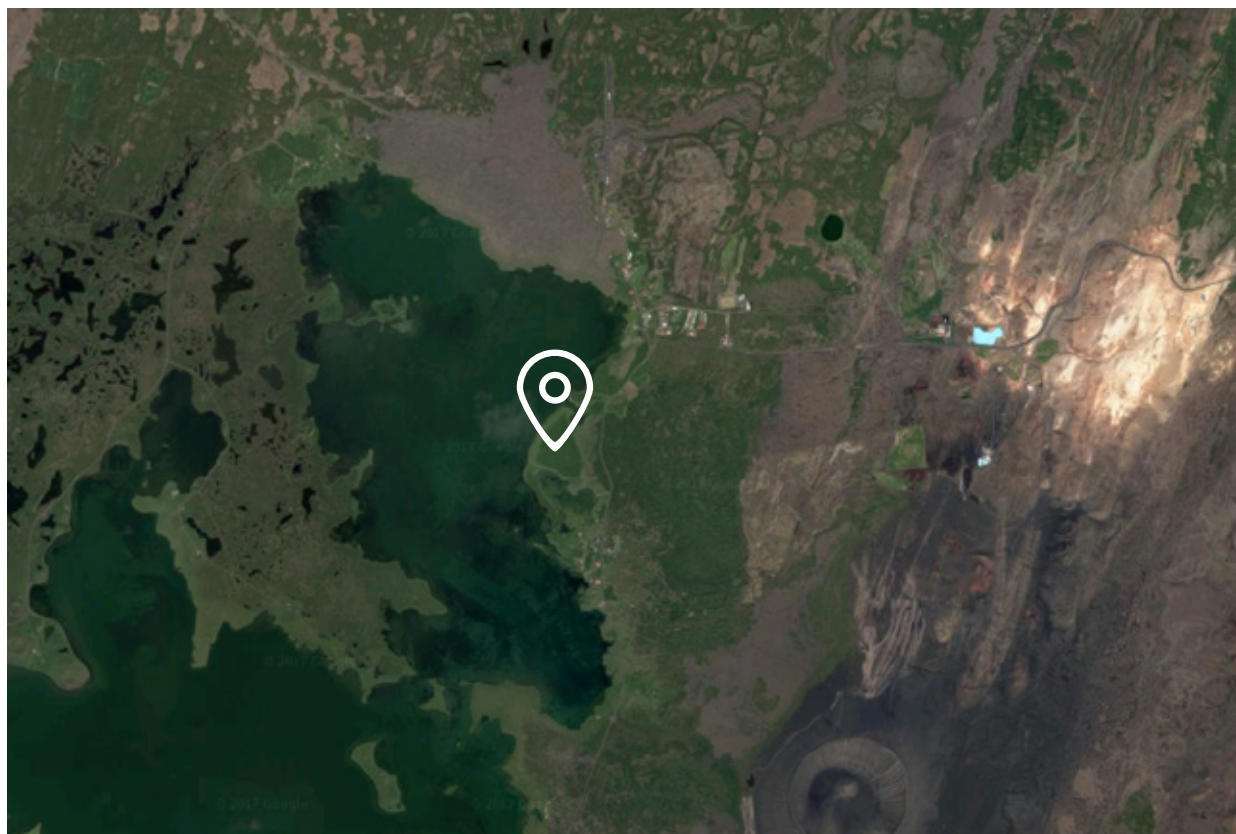
The 3 hectares-large competition site is to be located in the northeast region of Iceland, on the opposite side of the island from the capital Reykjavik. The chosen location sits adjacent to the Mývatn lake, a shallow eutrophic lake not far from Krafla volcano. Created by a large basaltic lava eruption 2300 years ago, the lake and its surrounding wetlands are a popular nesting ground for waterbirds, especially ducks, which have been annually monitored by the Mývatn Research Station since 1975.

The site is located within close proximity to a volcano, as well as thermal pools. Due to the delicate nature of the region, no construction can take place within 200 metres of the lake.



SITE COORDINATES:
@ 65.631680, -16.928828

SITE PLAN AND PHOTOGRAPHS ARE AVAILABLE FOR DOWNLOAD AT NORTHERNLIGHTSROOMS.beebreeders.com





COMPETITION SITE

SITE CAD PLAN IS AVAILABLE FOR DOWNLOAD AT NORTHERNLIGHTSROOMS.beebreeders.com



MORE SITE PHOTOGRAPHS AND VIDEOS ARE AVAILABLE FOR DOWNLOAD AT
NORTHERNLIGHTSROOMS.beebreeders.com

PRIZES

3 winning proposals, 2 special award recipients and 6 honourable mentions will be selected. Bee Breeders will award a total of **US \$6,000** in prize money to competition winners as follows:

Prize money US \$6,000	
1st Prize US \$3,000	BB Student Award US \$500
2nd Prize US \$1,500	BB Green Award US \$500
3rd Prize US \$500	6 HONOURABLE MENTIONS More information about the special awards at NORTHERNLIGHTSROOMS.beebreeders.com

The Northern Lights Rooms are planned to be constructed in 2019 with all winning and honourable mention designs to be put forward for consideration for the final design of the building.

PUBLICATIONS:

The winners will get international art and design media coverage and will be featured on the Bee Breeders website.

A full list of media partners who have committed to present the competition winners in their publications can be found on NORTHERNLIGHTSROOMS.beebreeders.com

CERTIFICATES:

Bee Breeders will acknowledge the outstanding performance of all winners and honourable mentions with Certificates of Achievement.



COMPETITION SCHEDULE

Early Bird Registration
12 OCTOBER - 08 DECEMBER

Advance Registration
09 DECEMBER - 14 FEBRUARY

Last Minute Registration
15 FEBRUARY - 11 APRIL

Closing date for registration
11 APRIL, 2018

Closing date for submission
15 MAY, 2018 (11:59pm GMT+0)

Announcement of the winners
30 MAY, 2018

REGISTRATION FEES

	Enthusiasts and companies	Students*
Early Bird Registration	US \$90	US \$70
Advance Registration	US \$120	US \$100
Last Minute Registration	US \$140	US \$120

* See requirements here:
beebreeders.com/competition-registration-types

SUBMISSION REQUIREMENTS

- Participants are required to upload four (4) A2 landscape-orientated presentation boards (must not exceed 5mb per jpg) with sketches, renderings, plans, sections, elevations, diagrams, and/or other presentation tools to explain their proposal.
- No video files are accepted.
- All information provided in writing must be in English.
- All submissions must be uploaded via the beebreeders.com upload panel. Access information and instructions on how to upload the presentation panel will be issued to participants via email immediately after successful registration.
- Presentation boards must not indicate any information related to individual's/team's identity.

Participants who do not comply with the requirements will be disqualified without refund.

RECOMMENDED SUBMISSION CONTENT

- Concept designs which highlight that all aspects of the design are of the highest quality and in keeping with the design brief and the proposed site.
- The main points of proposed plans and sections, multiple internal and external perspectives demonstrating the spatial quality of the building as well as operational needs and accessibility requirements.
- Demonstration of project feasibility in regards to environment, climate conditions, lifecycle and responsible use of materials.
- Demonstration of project construction, materiality, functions, management and maintenance; approach to environment, energy and sustainability, indoor environment and logistics.
- Visualizations; artist impression in nature setting to illustrate how their proposal fits in with the quality, value, and significance of the nature of Iceland.

PRESENTATION DELIVERABLES SET

- Primary sections; (suggested scale 1:50)
- Primary floor plans; (suggested scale 1:50)
- Enlarged sections and elevations highlighting key spaces or relationships; (suggested scale 1:10)
- Details: (suggested scale 1:5)
 - Envelope
 - Key materials
 - Site or landscape
- Axonometrics providing information on building systems or illustrating key architectural concepts;
- Diagrams:
 - Circulation
 - Public versus private space
 - Lighting
 - Landscaping
 - Transportation
 - Energy systems
- Perspectives:
 - Primary interior spaces
 - Primary site locations

Please note the PRESENTATION DELIVERABLES SET listed above is a suggestion only. Participants can choose to use the entire list, a selection from it, or propose a completely different set that would explain their design in the most efficient manner.



JURY & EVALUATION PROCESS

Competition jury consists of two jury panels:

- Core jury panel
- Consultative jury panel

Full jury panel members list is published at NORTHERNLIGHTSROOMS.beebreeders.com.

The core and consultative jury panel will be responsible for setting the criteria that participants need to fulfill based on the site and brief and will evaluate each submission accordingly.

Participants are advised to research both the working site and previous similar case studies as part of the design process.

“ICELAND NORTHERN LIGHTS ROOMS” is a competition, which encourages participants to experiment with the limits of architecture. The jury may choose to reward projects that show a high degree of creativity, even if they breach any of the rules, as long as it's justified.

Selecting Top 3 winners:

- ① Consultative jury panel will produce a shortlist of 40 from all submitted entries.
- ② Consultative jury panel will select 9 competition finalists from the shortlist.
- ③ Core jury panel will evaluate the 9 finalists and select the top 3 winning projects and the 6 honourable mentions.

Student Award:

- ① Consultative jury panel will produce a shortlist of 40 from all submitted student entries.
- ② Consultative jury panel will select 9 competition finalists from the shortlist.
- ③ Core jury panel will evaluate the 9 finalists and select the winning project.

Green Award:

- ① Consultative jury panel will produce a shortlist of 40 from all submitted entries.
- ② Consultative jury panel will select 9 competition finalists from the shortlist.
- ③ Core jury panel will evaluate the 9 finalists and select the winning project.



ARCHITECTURE STUDENTS

Bee Breeders architecture competition organisers would like to hear from representatives of universities, schools, and colleges offering architecture/design studies.

Contact us to receive special student rates for group registration (discount applies for 3+ registrations from one university/school) as well as further information and support to get your students involved in architecture competitions.

Send us a request from your university email address along with basic information about you and your university/school.

Please note that only recognized university staff can apply for the reduced student rate.

ELIGIBILITY

The competition is open to all. No professional qualification is required. Design proposals can be developed individually or by teams (4 team members maximum).

People who have direct personal or professional relationships with jury panel members or organisers may not participate in this competition.

MEDIA PARTNERS

A full list of media partners who have committed to present the competition winners in their publications can be found at NORTHERNLIGHTSROOMS.beebreeders.com

For potential media partners who are also interested in covering the present competition and its winners, please contact us at hello@beebreeders.com

Competition press kit (in English) and banners are available at NORTHERNLIGHTSROOMS.beebreeders.com/press

COMPETITION DOCUMENTATION

The following information is available for download at NORTHERNLIGHTSROOMS.beebreeders.com:

- *Full competition brief*
- Site and context photographs
- Site CAD plan

All information can be downloaded as often as required; no additional information or material will be provided after registration.

The brief and all associated documentation for this competition are for the sole purpose of an academic exercise and are not legal documents.

The provided materials, or alternatives, can be used, created, or sourced at the participant's discretion.

Full Competition Terms & Conditions:
NORTHERNLIGHTSROOMS.BEEBREEDERS.COM/TERMS

© Bee Breeders
Architecture Competition Organisers
hello@beebreeders.com
beebreeders.com

