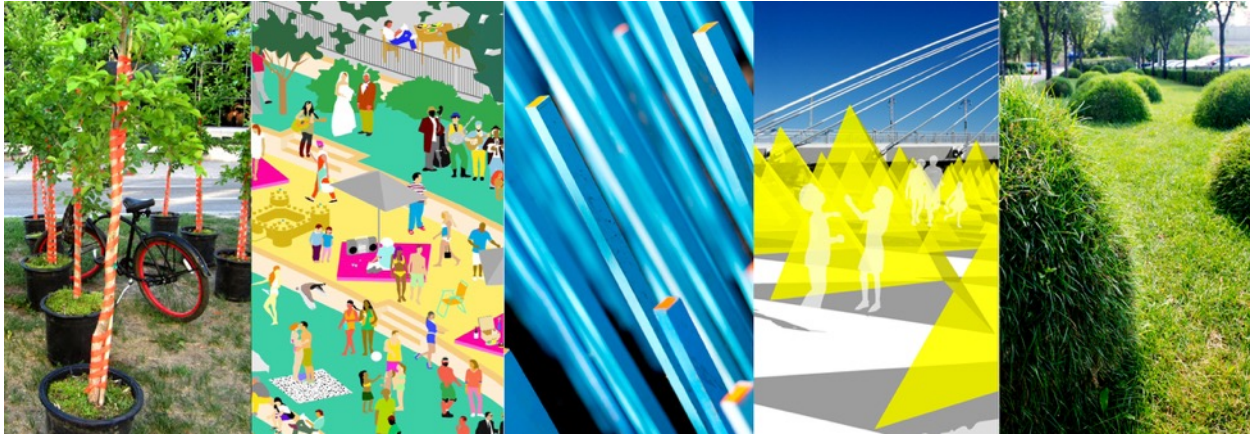


COOL GARDENS SUMMER 2016: CALL FOR ENTRIES

GUIDELINES / CALL FOR PROPOSALS



[General]

Cool Gardens is a public exhibition of contemporary garden and art installations that offers a shift of sensation for the summer—cooling—as a general theme for public projects in Winnipeg’s downtown. Cool Gardens brings architects, landscape architects, designers, artists, and the public together, celebrating the interface between urbanism, landscape and design. The competition will feature locally, nationally, and internationally acclaimed artists and practitioners in the Winnipeg context, highlighting the value of art and design in public space.

Presented by StorefrontMB and The Forks, Cool Gardens was established as a central Canadian counterpart to the Reford / Jardin de Metis concept, celebrating the interface between nature, art, urbanism and design. The exhibition has run in Winnipeg for the past three years, with 2016 marking the fourth annual event. Past exhibitors include BGL, SPMB, Sol Desharnais, Scatliff+Miller+Murray, Ewa Tarsia, ATLRG, and Claude Cormier [providing a visiting garden from the Jardins de Métis]. The event is highly accessible to a broad audience including children, tourists, shoppers, cyclists, and business people.

Cool Gardens mirrors Winnipeg’s internationally acclaimed Warming Huts Winter Program. Cool Gardens places design culture at the center of the summer activities in Winnipeg and satellite locations, while offering pleasant relief from summer’s exasperations. In Winnipeg, installations will run from Main Street to Provencher Boulevard, highlighting this generally unrecognized pedestrian linkage that bridges the Anglophone and Francophone communities. Installations along this axis provide an engaging, creative, and active experience of downtown Winnipeg. New this year are satellite sites on Waterfront Drive and in Brandon.

Cool Gardens 2016 will take place from June 24th to September 25th, 2016. In addition to the 4 new gardens selected by competition, Cool Gardens 2016 will include an invited garden by internationally recognized visual artist Micah Lexier, as well as the re-mounting of 4 previous gardens: LASA Garden [Lambkin-Anderson, Cheung, Cohen + Freeman], Citizen Garden [In The Middle], Cool Dots [Ewa Tarsia], and Le Rendez Vous [LaTourelle + Witthöft].

[About the Organizer]

StorefrontMB was established in 2010 to foster Design Culture in Manitoba. Since its inception, StorefrontMB has coordinated a host of events, including: forums, film series, the annual Winnipeg Design Festival, Winnipeg Commerce Design Competition, the Architecture Fringe Festival, Table for 1200, as well as publishing two books on Manitoba Architecture. The organization is overseen by a board of directors that draws from all spatial disciplines: Landscape, Architecture, Interiors, and Planners.

DEADLINE TO SUBMIT PROPOSALS: January 6th, 2015 at 6PM CST.

COOL GARDENS SUMMER 2016 COMPETITION DESCRIPTION:

[Concept]

The *Call for Entries 2016* seeks creative entries that prompt curiosity, play, and appreciation in the surrounding local community by highlighting the significance of nature, art, and design. Central to Cool Gardens, is the idea that contemporary design can instigate one to participate in public spaces in interactive, critical, poetic, and meaningful ways. The intention of this emergent festival is to provoke questions about our public spaces and about the role of garden design to give another meaning to our urban culture. Cool Gardens thus animates our public spaces with a critical collection of experiences - expanding the idea of what a garden might be.

Cool Gardens expands the vocabulary of garden design and serves as a learning tool. As we go back to our boulevards and backyards we hope to spread the creativity of Cool Gardens to the everyday practice of gardening in our city and region, creating in the process, a dialogue on contemporary design with our sister cities across Canada and the world.

[Evaluation Criteria]

While there is no overarching competition theme, entrants are expected to be responsive to the specificity of their selected site conditions, within the overall framework of *cooling*. Proponents may also wish to indicate how their garden would be feasible to re-mount in subsequent years. Winning proposals will be selected by the jury based on: creativity, originality, clarity, durability, provisions for barrier-free access, ease of fabrication and decommissioning, budget, interpretation of the site and cooling, and potential for public engagement.



"Sitting On The Docks of Broadway!", Aaron Duke, Duncan Bates, and Michael Barker, 2015

[Jury]

The Competition Jury is comprised of the following individuals:

Bob Somers [Principal, Scatliff+Miller+Murray Urban Design and Landscapes]
Eric Plamondon [Artistic Director, La Maison des Artistes]
Jae-Sung Chon [Owner, MAKE / Coffee + Stuff; Instructor, Faculty of Architecture, University of Manitoba]
Paul Jordan [CEO, The Forks North Portage Partnership]
Peter Hargraves [Curator, Warming Huts; Principal, Sputnik Architecture]

alongside Co-Curators of Cool Gardens 2016:

David Penner [Curator, Cool Gardens 2013 / 2016; President, StorefrontMB; Principal, David Penner Architect]
Jeff Palmer [Curator, Cool Gardens 2016; Principal, Catapult Community Planning]

Post-selection Technical Advisor:

David Pancoe [Manager Special Projects, The Forks Renewal Corporation]

[Budget + Honoraria]

Final budgets for the gardens will be subject to funding, the breakdown is as follows:

_ Team / Artist Fees:	\$1,500
_ Hardscaping:	\$2,500
_ Softscaping:	\$3,500
_ Installation :	\$2,500
_ Total Budget:	\$10,000*

The winning entrants will manage and oversee the construction of the gardens in consultation with Cool Gardens curators. Installation of the gardens will be executed by the designers or managed by them and paid for from the Total Budget:

In addition, up to **\$1500** will be provided to help offset transport and accommodation costs for each winning team from outside the province of Manitoba. Out-of-province teams are encouraged to seek travel grants from their own jurisdictions to make up the difference.

Teams are encouraged to source additional funding or in-kind contributions for their installations if actual costs exceed the Total Installation Budget. Gardens may be exhibited for more than one year. In the case where a garden is re-mounted in 2017, the design team will receive an additional honoraria for each additional year exhibited.



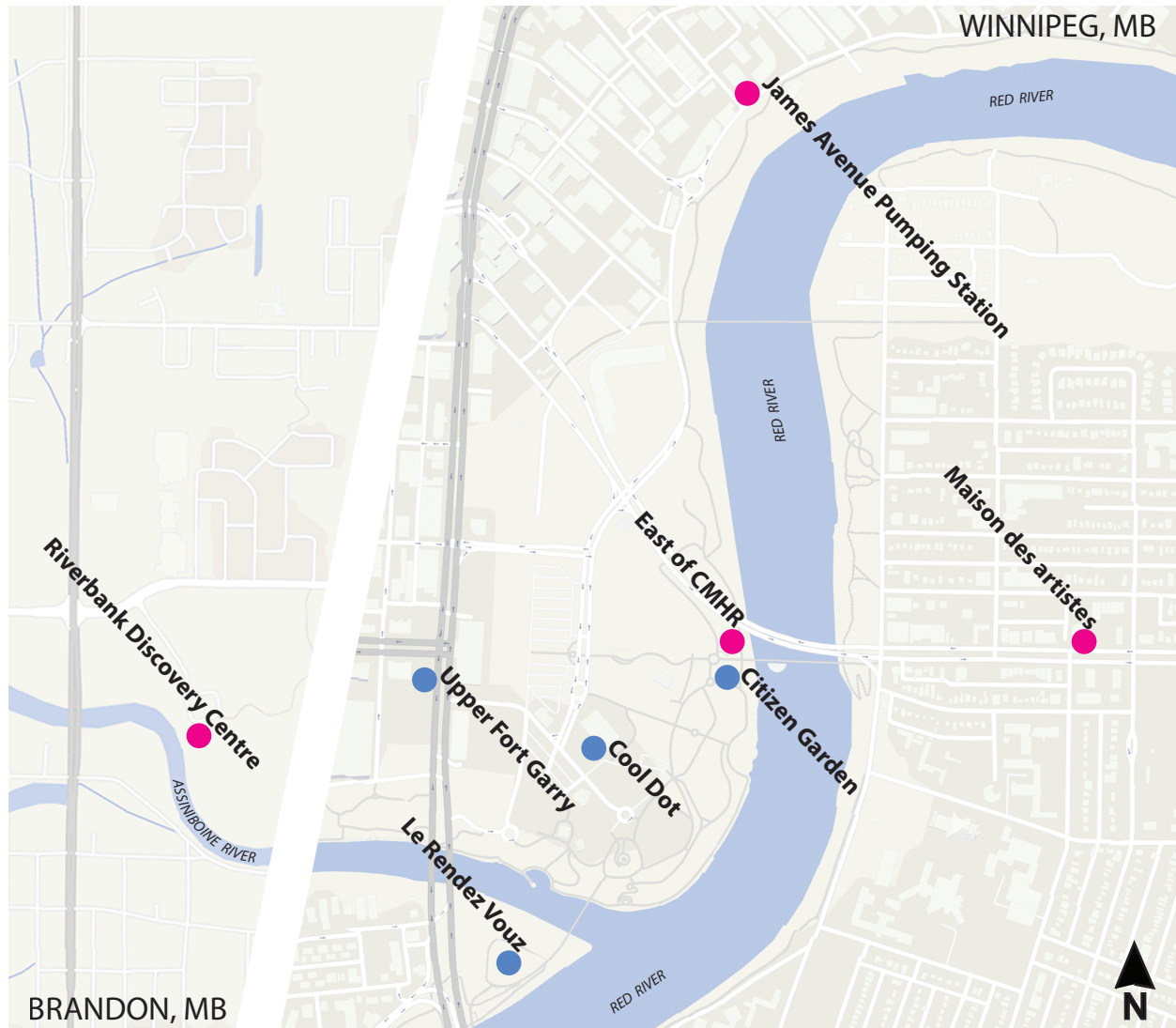
"Le Rendez Vous", LaTourelle + Witthöft, 2015

[Schedule]

November 20, 2015	Registration Opens: Reference Files Available Online
December 21, 2015 (6:00PM CST)	Registration and Site Selection Deadline
January 6, 2016 (6:00PM CST)	Deadline for Competition Submissions [electronic]
January 18, 2016	Confirmation of Eligibility
January 25, 2016	Adjudication
February 12, 2016	Announcement of Winner
February 15, 2016	Technical Review and Detailed Design
March 14, 2016	Detailed Design Submission for Selected Projects
June 18 - June 24, 2016	Installation Period [winners must be available]
June 23, 2016	Media Event
June 24, 2016	Garden Party
September 25, 2016	Closing and decommissioning

[General Site Information]

Sites for the Cool Gardens extend along an axis that includes The Forks, La Maison des Artistes grounds [Provencher Boulevard], and Winnipeg's business centre [Broadway Boulevard]. While the Forks site serves as anchor and connector, the projects span and bridge [both physically and metaphysically] the Francophone and Anglophone districts of Winnipeg.



[2016 Competition Sites]

1. La Maison des artistes
2. East of CMHR
3. James Avenue Pumping Station
4. Riverbank Discovery Centre, Brandon

[Re-Mount / By-Invitation]

- _ Citizen Garden by InTheMiddle [Re-mount, Esplanade Riel]
- _ Cool Dot by Ewa Tarsia [Re-mount, Inn at the Forks]
- _ Le Rendez-Vous by LaTourelle + Witthöft [Re-mount , South Point]
- _ LASA Garden by Lambkin-Anderson, Cheung, Cohen + Freeman [Re-mount , Upper Fort Garry]

[Site 1: Le Jardin de Sculptures at La Maison des artistes visuels francophones]

Site 1, Le jardin de sculptures is nestled within the heart of Winnipeg's French quarter, at the midpoint of St. Boniface's main Street, boulevard Provencher. This Boulevard acts as the historic, cultural and economic spine to a vibrant community that is proud of its history, both in the past, and yet to be written. The boulevard is seen as a natural extension of L'esplanade Riel connecting St. Boniface's offerings to the larger Winnipeg community by a short walk across a picturesque bridge.

An initiative of La Maison des artistes visuels francophones, le jardin de sculptures or "The Sculptures Garden" was designed by local architect Guy Prefontaine and landscape architect Ken Rech in 2008. It is continually used to showcase Francophone contemporary artists from Manitoba and from across Canada with 5 permanent sculptures from artists such as Joe Fafard and Michel de Brouin as well as hosting

many ephemeral pieces like Carousel from BGL or Rest Stop from a U of M collective. Located between historic building forming the old civic campus for the city of Saint-Boniface, the garden hosts special events like Nuit de ART, a night celebrating art in all its forms or Mercredi en musique, a lunch hour concert for the community. Even when not animated by live performance, this public space is active as it was designed with irregular shapes allowing pedestrian pathways to lead you to the sculptures throughout and offers new unique sight lines amongst the historic buildings. Unused sculpture nooks indicate where future works of art will lie. Open spaces offer an idea of where people naturally congregate. All of which has a lighted perimeter. This public space is defined by its marquee buildings but allows art to give it a contemporary purpose and narrative.



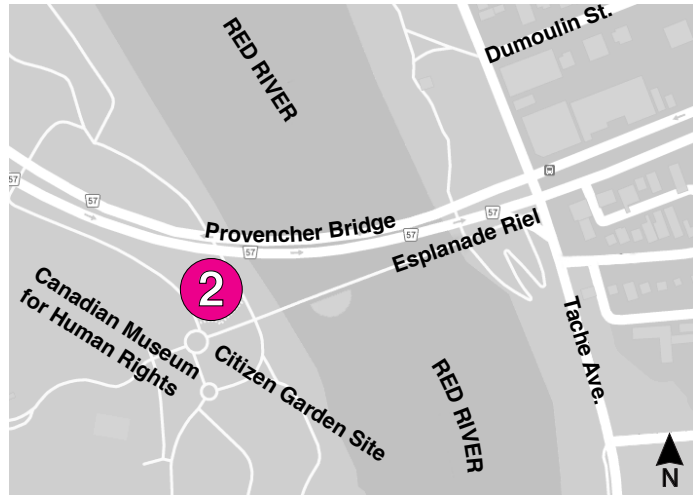
[\[DOWNLOAD ALL MAPS + PHOTOS + DRAWINGS \]](#)



[Site 2: East of CMHR]

Site 2, the East of CMHR site, is located East of the Canadian Museum for Human Rights and is nestled between the base of Etienne Gaboury's elegant Esplanade Riel foot bridge and the Provencher Bridge. Both bridges are significant in their presence, acting as a strong East/West axis that connects two historically vital territories in Winnipeg; The Forks and St. Boniface.

A long approach East bound brings visitors to this gently sloping, manicured site where the Red River flows only feet away. There are several groomed paved pathways surrounding this pocket of land that entices visitors to weave in and out above and beneath the bridges. There is a strong juxtaposition of "line" in terms of the verticality of the Esplanade Riel and the horizontal nature of the vehicular bridge.



[\[DOWNLOAD ALL MAPS + PHOTOS + DRAWINGS \]](#)

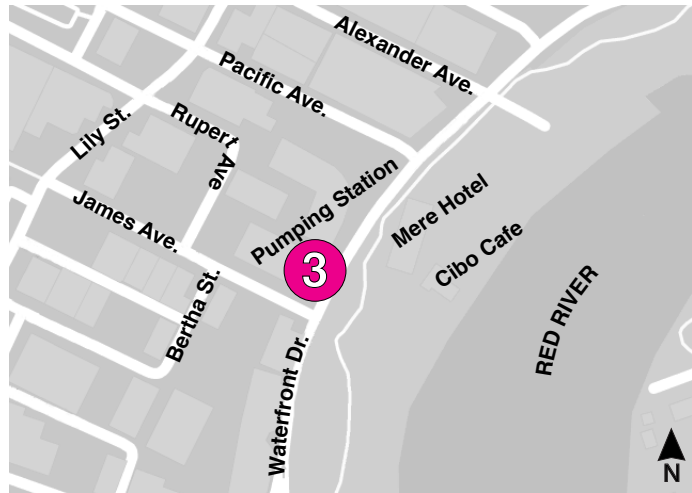
Site 2 sits on the West side of the Red River with in a 13.6 acre plot of land that is known as The Forks National Historic Site of Canada (1989). Today, The Forks is home to a plethora of beautifully manicured public spaces, inspiring and captivating sculptures, historic and newly historic buildings, a skateboard park, a market place and a native prairie garden. The Forks hosts many year round events and activities such as concerts at the Scotia Bank Stage, fitness competitions like Cyclocross and the world acclaimed winter competition; Warming Huts, where architects and designers compete to have their installations adorn significant lengths of the frozen Red and Assiniboine Rivers throughout the winter months in Winnipeg.



[Site 3: James Avenue Pumping Station]

Site 3, the James Avenue Pumping Station site, sits alongside the Red River on Waterfront Drive - an emerging residential enclave in the historic Exchange District. Waterfront Drive was developed on a former railway spur line that ran along the Red River. The Site overlooks Juba Park to the East, a linear park that provides waterfront green space and access to the river.

The Pumping Station itself was constructed in 1906 and was considered to be an engineering marvel at the time. The Pumping Station drew water directly from the Red River and distributed it throughout downtown. The building operated until 1986 when it was decommissioned. Today it sits vacant, awaiting a sensitive repurposing into a contemporary use.



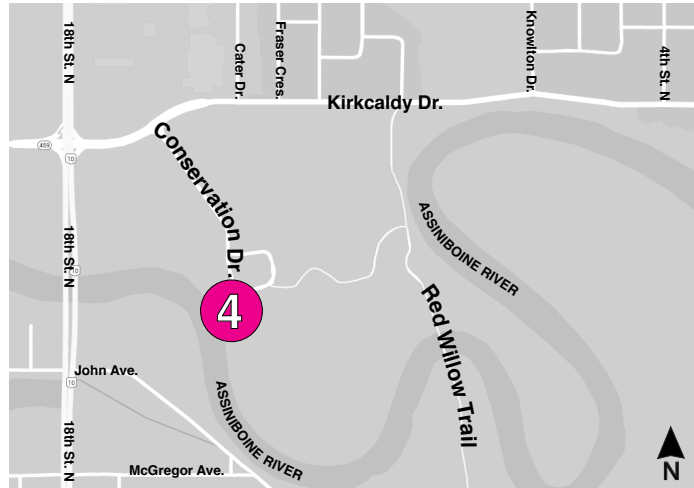
[\[DOWNLOAD ALL MAPS + PHOTOS + DRAWINGS \]](#)

Waterfront Drive, a landscaped boulevard accommodating public art, pedestrians and local traffic begins at The Forks and proceeds approximately three kilometres north through the Exchange District. The Pumping Station site is approximately 32m x 15m in size with a crushed limestone base and is currently used as a temporary gravel parking lot. Immediately north and south lie newly constructed residential buildings with commercial development on the main floor. Across Waterfront Drive to the East lies Juba Park, and within it the contemporary Mere Hotel and restored Harbourmaster Building.



[Site 4: Riverbank Discovery Centre, Brandon]

Site 4, the Riverbank Discovery Centre site in Brandon, Manitoba is located along a gently sloping grassed area adjacent to the Riverbank Discovery Centre. Located in the valley of the Assiniboine River that meanders through Brandon, Manitoba's second largest city, the Assiniboine River begins its journey in eastern Saskatchewan, flowing over 1000 kilometres until it reaches the Red River at The Forks. The lands within the floodplain are subject to seasonal flooding and tend to be used for agricultural and recreational uses. The Riverbank Discovery Centre, located on the banks of the Assiniboine, is home to the Brandon and Regional Tourism Centre, Brandon Riverbank Inc., Brandon First and Ducks Unlimited Canada Provincial Field Offices.



[\[DOWNLOAD ALL MAPS + PHOTOS + DRAWINGS \]](#)

The site is contained by a series of pedestrian pathways that extend throughout the river valley allowing for tourists and residents of Brandon to explore the many diverse wildlife and ecologies that inhabit this land. Decorative lighting found along the adjacent pathways are inviting, allowing visitors to explore from dusk until dawn.

To the disappointment of many, much of the Discovery Centre's lands have been devastated by extensive overland flooding; a naturally occurring event that has hit this site twice in the last five years. The grassed site is roughly 200 feet by 75 feet (at it's widest point) with a handful of immature trees recently planted around the perimeter.



[Registration]

Proponents must register for the competition by December 21st online by emailing a completed **Registration and Site Selection Form** to info@coolgardens.ca. Cool Gardens will confirm the registration by providing a unique Registration Number via email.

In order to receive ample submissions for all sites, Cool Gardens may limit the number of submissions for a given site in which case, an announcement will be posted on the www.coolgardens.ca website.

A Registration Fee of \$50 must be received prior to January 6, 2016. Fees are payable by cheque or money order to 'Storefront Manitoba'. Please include your Competition Registration Number in the memo line of the cheque or money order. Forward payment by mail to StorefrontMB, 120 Yale Avenue, Winnipeg, MB, R3M 0L7.

[Eligibility]

This Call for Submissions is open to teams and individuals consisting of designers, architects, landscape architects, and / or artists. Individuals may be students, interns, or practitioners. Multiple submissions are permitted although a separate registration fee will be required for each submission.

[Submission Requirements]

Proposals meeting the criteria outlined below shall be submitted in English, electronically, to info@coolgardens.ca before the deadline. Email size must not exceed 7.5MB. Files must follow the format and entry requirements listed below for both team information and design proposal information.

**All submission documents must clearly indicate the team Registration Number.
Design Proposal documents must only indicate the Registration Number.**

Team Information:

- Four page maximum [format for 8.5" x 11" printing].
- Name of proposed project.
- Individual or team members names with brief CV.
- Name of one main contact person, including contact coordinates.
- A maximum 100-word description of the individual or team including academic or professional association affiliation.
- Four images of selected projects for which team members have been responsible. Images must be accompanied by a brief description for each project.

Information on individuals and team members will be withheld from the jury until the final selection. Information provided will be used to verify eligibility and assess whether teams have the capacity and expertise required to manage the design and construction of the installation.

Design Proposal Information

Page One:

- Project Summary [format for 11" x 17" printing, landscape] [Include Registration Number]
- 100 to 150 word text describing the overall design idea and the experience offered to visitors.
- Minimum of one 3D rendering showing the garden in its entirety.
- Discretionary Images: concept diagram(s), precedents, etc.

Page Two:

- Design Details [format for 11" x 17" printing] [Include Registration Number]
- 4 main views or plan / elevations of the garden indicating size and the specific materials proposed.
- Diagram(s) and / or detail(s) indicating method of installation / construction.

Submission documents must be landscape format PDFs with 300dpi resolution and be organized into two separate PDF documents labelled accordingly: TI_registration number and DPI_registration number. Eg.: TI_456 and DPI_456

[Fine Print]

- * Cool Gardens & SfMB reserve the right to use & distribute submission documentation & images for promotion & publication.
- * Cool Gardens reserves the right to reject any and all submissions for a specific site.
- * The scope of Cool Gardens 2016 is contingent upon funding.



"Cure De Ville", Janelle Tougas, 2015

Thank you for your interest in participating in Cool Gardens 2016!



StorefrontMB
Architecture/Design/Urbanism