

UNYT

Athenaeum - 2023

Bringing architecture to people

PREMISE



Fig: 1 – A view of the Copenhagen Port

Architects are not endowed with designing just buildings but with time, we are now building economies and megacities. This expanded role of architecture is becoming more and more evident with the passing century, where the profession found itself from making enclosures for functions to defining how the functions would be. The keywords to define the architecture, transformed from just Aesthetics and Order, to Efficient and Sustainable. And it's continuing to change.

As 2023 comes closer, these changing definitions are becoming more noticeable. Especially when we see this in context of our education springing from the grassroots of architecture legends, to modern stalwarts of today. To braver design explorations and less of revivals. To more diversity in design, with knowledge passed on to progressive countries. As architecture evolves these themes continuously shift with amazing trails behind.

And this, in the context of Denmark, looks more real than ever.

EVOLUATION OF DANISH ARCHITECTURE

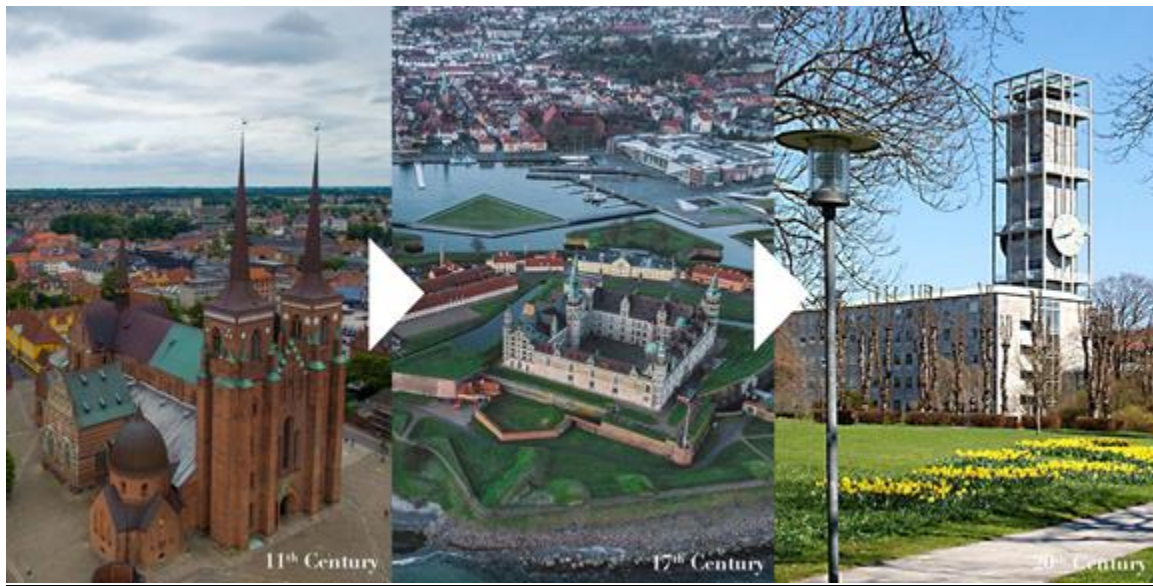


Fig: 2 – Evolution of Danish Architecture

Architecture in Denmark has come a long way. More than a thousand years ago, in the Viking age, military encampments were built in Denmark. These constructions, which are known through excavations, are remarkable for their circular ramparts. The architecture was then superseded by the era of exploring church architecture which explored innovations in wood and stone. A series of forts and marveling churches of the 16th century testify to these explorations.

While the past already surpasses expectations, the advent of the known modern functionalist Danish architecture begins in the early half of the 20th Century. The likes of Aarhus City hall and SAS Radisson hotel are some reflections of this era. Ironically, the most famous example of Danish architecture is not in Denmark— it is Danish architect Jørn Utzon's Sydney Opera House in Sydney, Australia. And from that point onwards, the global contribution from Danish Architects is world known.

DANISH CAPITAL - COPENHAGEN



Fig: 3 – The Copenhagen Opera House - A global standard for Opera venues around the world.

While it's true that such iconic structures make places memorable, the capital of Denmark - Copenhagen - balances ties to the past and futuristic architectural marvels almost flawlessly. The city boasts of various venues of international stature and architecture pieces that fit in the book's most revered examples of modern built heritage. The city contributes a very people and outdoor-friendly experience - and aims high towards achieving carbon neutral status by 2025.

And with such a diverse yet consistently progressive history, UNESCO and UIA have named Copenhagen as the World Capital of Architecture for 2023. As UNESCO, declares this significant title, they quote "Copenhagen provides a unique combination of culture, tolerance, global connectivity, well-functioning public transport, green spaces, and high-quality architecture."

BRIEF



Fig: 4 – Aerial View of Copenhagen's urban architecture

The secret of Copenhagen is open for the world to discover, and 2023 marks this special moment that has a chance to open it for the rest of the world. **The competition brief here is to design an Athenaeum for Architecture at Copenhagen, that resonates with the evolving trends of world architecture.** The word “Athenaeum” in the 21st century should be more than just a space for learning about architecture.

This one-of-a-kind endeavor of Architecture for Architecture should disseminate the past and its links to the current architectural trends, which shall pave the way to the future of world architecture ideologies.

The users of this Athenaeum would not be just architects or from a certain educational background, but for people and creatives at large. The place is not dedicated just to the built environment, but to the architects of ideas and concepts that led to this place, inspiring more people to know about the hidden lines between architecture.

OBJECTIVES

The purpose of the Athenaeum is to act as a gateway for the old & new, a vault of knowledge and ideas that initiate dialogue for the future of architectural philosophies of the world.

1. Content

The challenge is to frame the various themes of how the Athenaeum of World Architecture and its evolving patterns are presented. The program should also have various activities associated with learning and leisure.

2. Experience

Once curated, the next step of the challenge is to craft how this journey or the message of architectural evolution is conveyed to people and designers from all around the world who would be visiting this place.

3. Enclosure

The final part of the challenge is to give a form to this experience crafted from the contents you have created for the Athenaeum. This can be springing from either the Danish fabric of Architecture or your interpretations from the world.

SITE

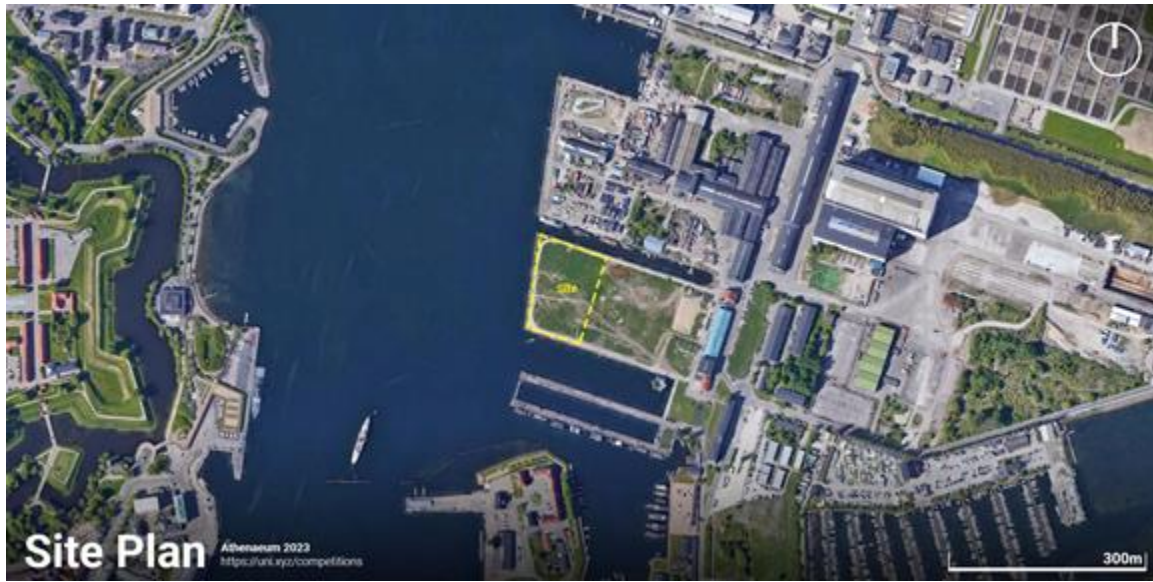


Fig: 5 – Site Plan

Coordinates: <https://goo.gl/maps/eZaZFHMbq9c3yyGE6>

Area: 10700sqm

Max Floor Area Ratio (FAR) - No Restriction

Height Restrictions - 15m

Ground Coverage (GC): - 40%

RULES

You have to deliver an architectural outcome on the following site, based on the given outlines.

- Recommended number of sheets/presentation images/boards: 5 (Five) of size [2800px x 3500px] in portrait digital format (JPEG only).

Minimum 3 (Three) & No maximum sheet limit. Each image should be less than 15MB. (Do not submit PNG format)

Minimum requisite submissions are sheets/boards + Cover image containing:

- Site plan (Compulsory)
- Key conceptual sections x 1 (Minimum)
- 3D views x 4
- Additional cover image of 2000px x 1000px
- Write an article/story in the Journal section# of the project (of about 700-1000 words) answering the questions given in the Additional Resources.

#Journal Section appears midway in the project submission portal. More instructions in the additional resources.

RESOURCES

This competition contains additional resources that contain a set of files useful to complete the competition submission. This folder is made available on your profile dashboard automatically as soon as you register.

This additional resource folder of this competition contains Submission Format files in PSD | AI | InDD, Guide to Journal Section + Questions, High-Res maps, Aerial Views of Site, and CAD file of the site plan.

Learn more on <http://bit.ly/athenaeum2023>

BASE RULES

- + The competition is open for students and professionals from all the disciplines of design.
- + The team limit for this competition is 4 members maximum per team.
- + You can register more than one team but they have to be registered separately.
- + Ensure that the final sheets submitted do not include your name or any other mark of identification.
- + Your submission is linked to your UNI user account which stands as your identification.
- + This is design ideas challenge only. There is no built commission/realization associated with the problem.
- + In case of publication in the yearbook we will reach out separately for selected entries.

PRO TIPS

- + Use exploded views to discuss multi-leveled conceptual models better.
- + Mention sheet number on the corner of every sheet.
- + Plagiarism of any idea/form/design/image will be disqualified with a notice.
- + All the sheets or images will be viewed on a digital device. e.g. Laptop screen or projector. Uploaded sheets or images will not be physically printed for evaluation. The submission hence should be prepared for digital viewing only.
- + Submit JPEG images only. (PNG will not function)

JUDGING CRITERIA & JUDGES

The entries will be judged by an international jury of the competition on the following criteria:

Presentation: The fundamental to a good entry is a good presentation.

Concept/Idea: Quality of thought and intent in the pre-design phase.

Spaces/Programme: How the spaces are calculated and ordered.

Design Outcome The final architectural outcome of the solution.

The judging panel can also add other criteria based on their internal discussions - which will be in line with the problem statement. Participants are advised to fulfill the above-given criteria first in their design. Names of the jury panel will be announced soon.

YEARBOOK

Winners of this competition will get annually published with us in our e-yearbook and annual publications.

Prizes / Deadlines / Registration

For complete information on active prizes and details on the entry fee, visit the **Awards & Fees** section of the competition here: - [Awards&Fees](#)

Learn more about this competition - schedule - prizes here: <http://bit.ly/athenaeum2023>