

WYCF SPACE

+ BRIEF +

+ WE YONE CHILD FOUNDATION
+ ARTS + CREATIVES DESIGNS LTD
+ ROSHNI STUDIO



WYCF SPACE



CONTENTS

INTRODUCTION	2
CONTEXT	3
WYCF & ARTS + CREATIVES	4
CONTEXT	5
LOCATION	6
SITE	7
BUILDING PROGRAM	9
CONSIDERATIONS	10
Climate	-
Environment	-
Materials & Construction	11
Budget	
RIBA Work stages	12
COMPETITION DETAILS	13
Eligibility	-
Awards	13
Schedule	14
Registration	15
Submission Requirements	-
Evaluation Criteria	-
The Construction	16

ARTS AND CREATIVES X ROSHNI STUDIO for WE YONE CHILD FOUNDATION

INCLUDING PRIZES FROM



:scale

ARCHI
HACKS

LEARN
UPSTAIRS

show it
better.

INTRODUCTION

Arts and Creatives Designs (A+C) have partnered up with We Yone Child Foundation (WYCF), a Sierra Leone based charity, which aims to improve the lives of vulnerable children and their families through quality education and life empowering opportunities.

We are inviting young Architects and designers to partake in Designing accommodation for volunteers and workspace for the WYCF team.

This is a great opportunity for young Architects to design with real life constraints and considerations of construction types, budget and client requirements, not to mention the valuable experience of developing the project to be built in Sierra Leone.

WYCF is developing a number of small scale infrastructure projects, with the help of public funding, to enhance the lives of under privileged communities in Freetown, Sierra Leone. These include, schools, hospital facilities, community support spaces and now, the new WYCF accommodation and workspace.

We encourage designs that are sustainable, practical, easily conceivable and which do not require complex technical skills in construction. The successful entry will be looked at in the view of buildability, cost effective and an over all enjoyable space.

We expect entries to take into account, the social, physical and environmental context of the site along with the functional aspect of the center. The winning entry/ team will be expected to develop their designs alongside the A+C team for construction in 2022.

The new development will play an essential role in supporting the volunteer program which is an important part of the charity's effort. The new WYCF Space will be able to primarily provide **low-cost accommodation** for volunteers, **an office space** for the team members, **storage space** for supplies, **rental space** for income.

All year around, volunteers visit the charity to take part in the program. Their roles can range from teaching a class, to working one-on-one with students with particular needs, to developing proposals, designing a community project or assisting with overall organisation administration. WYCF has hosted several students from different nationalities looking for an international placement to fulfill their university requirements.



WE YONE CHILD FOUNDATION (WYCF)



In 1996, twelve-year-old Santigie Bayo Dumbuya was among several boys who were taken from Kamabonko Village to fight for the Revolutionary United Front during the Sierra Leone Civil War. Fighting near the Guinean border, by the age of fourteen Santigie had sustained multiple bullet and shrapnel wounds.

In 1999, Santigie's unit were stationed near a town called Sanyah.

'When we entered the town in the evening the heavy gunfire sounded like music, but full of death and sorrow. What I saw on that day was so terrible. Some of my close friends were killed. During the fighting I saw a female child at the age of 5-6 years old crying. I saw two people lying on the ground, one was already dead and the other is struggling to die.' Santigie remembered his village and the person whom he was raised to be - 'that was the day of my revolution and my heart was inspired.'

He dropped his gun and ran through the crossfire to save the girl. With no food or water, Santigie carried her for two days and two

nights to safety. He saved her life. Santigie never saw the girl again. He went to Freetown to recover from the war, complete his education and founded We Yone Child Foundation (WYCF) in 2009.

He decided to focus WYCF's efforts on Kroo Bay and George Brook. The appalling conditions in these two communities called for action and no other organisation was producing results. 'We Yone' means 'our own' in the locally spoken Krio language. It is the perfect description for the way we feel about the children we work for every day.

WYCF's strategic priorities up to 2025 are:

- High-quality primary schools
- Access to secondary school
- Equal opportunities for girls and women
- Healthy families in healthy communities
- Female empowerment and self-reliance



CONTEXT

SIERRA LEONE

Sierra Leone is located on the Western tip of the African continent. The capital Freetown, also as the main port city is at the central of the country's trade and finance. The country is known for its beaches and its historical role in the transatlantic slave trade.

The country was discovered in the 15th century and owes its name to the Portuguese explorer, Pedro De Sintra. Its name was derived from Serra Lyoa (Lion mountains referring to the hills that surround the harbor).

The devastating eleven-year armed conflict in Sierra Leone was characterized by extreme brutality and widespread human rights abuses against civilians.

During the war, which lasted from 1991 until 2002, rebels, and to a lesser extent government forces, consistently failed to distinguish between civilians and combatants. Hundreds of civilians suffered from the signature rebel atrocity of limb amputation while thousands of girls and women were subjected to sexual violence. All sides recruited and used child combatants.

In the post-war context, the impact on the youth, their education and wellbeing are still a pressing issue. As children were displaced into rebel forces, many experienced years of trauma, no access to education, and trouble adapting back into family life.

The lack of education are also compounded by poverty, gender discrimination, long distances to schools, perceived low value placed on education and negative social norms practices. 'Female Genital Mutilation (FGM - 86.1 per cent), early marriage (30 per cent of women are married before age 18), teenage pregnancy, an unsafe learning environment' says UNICEF.

EDUCATION

More than a decade later, education in Sierra Leone is a pressing issue. The first nine years of education are compulsory, but this law remains virtually impossible to enforce due to the shortage of facilities left in the war's wake. The West African nation continues to struggle with its school system and the difficult tasks of rebuilding schools, training teachers, and educating children who have never stepped foot inside of a classroom.

In August 2018, Government of Sierra Leone launched a phased Free Quality School Education initiative that provides free admission and tuition to all children in government-approved schools. While the initiative is timely and well received, many children are still out of school, at risk of dropping out or not benefiting from this initiative.

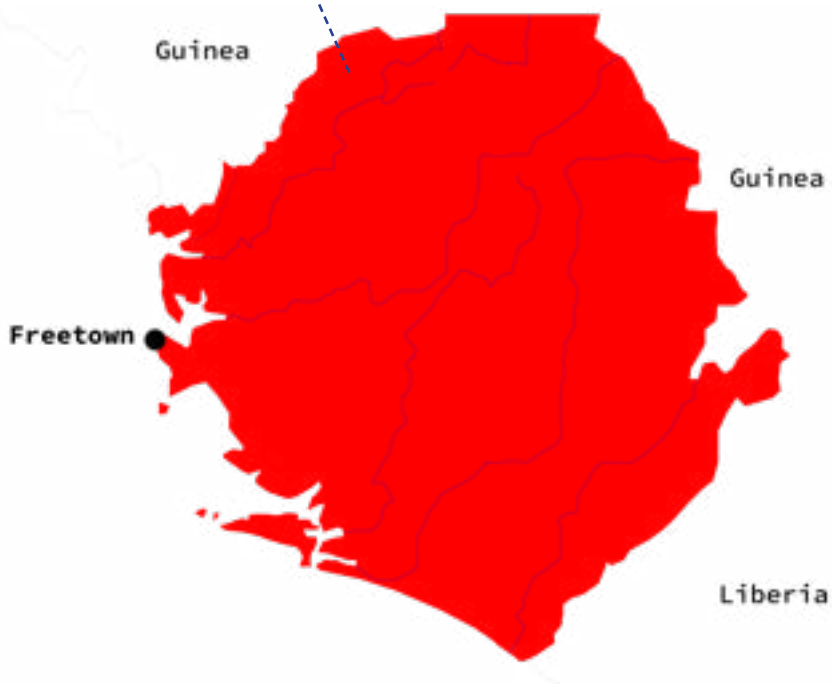


Aerial view of Freetown

LOCATION

Sierra Leone is located in the western tip of the African continent.

Situated on the coast, the country neighbors Guinea, Liberia along with a stretch of the Atlantic Ocean.



THE SITE



Shelter – due South–West



View from site – due North–East



Google view of site location in Freetown

The site is currently undeveloped but is surrounded by residential dwellings and shelters, served by an access road (Smith Drive).

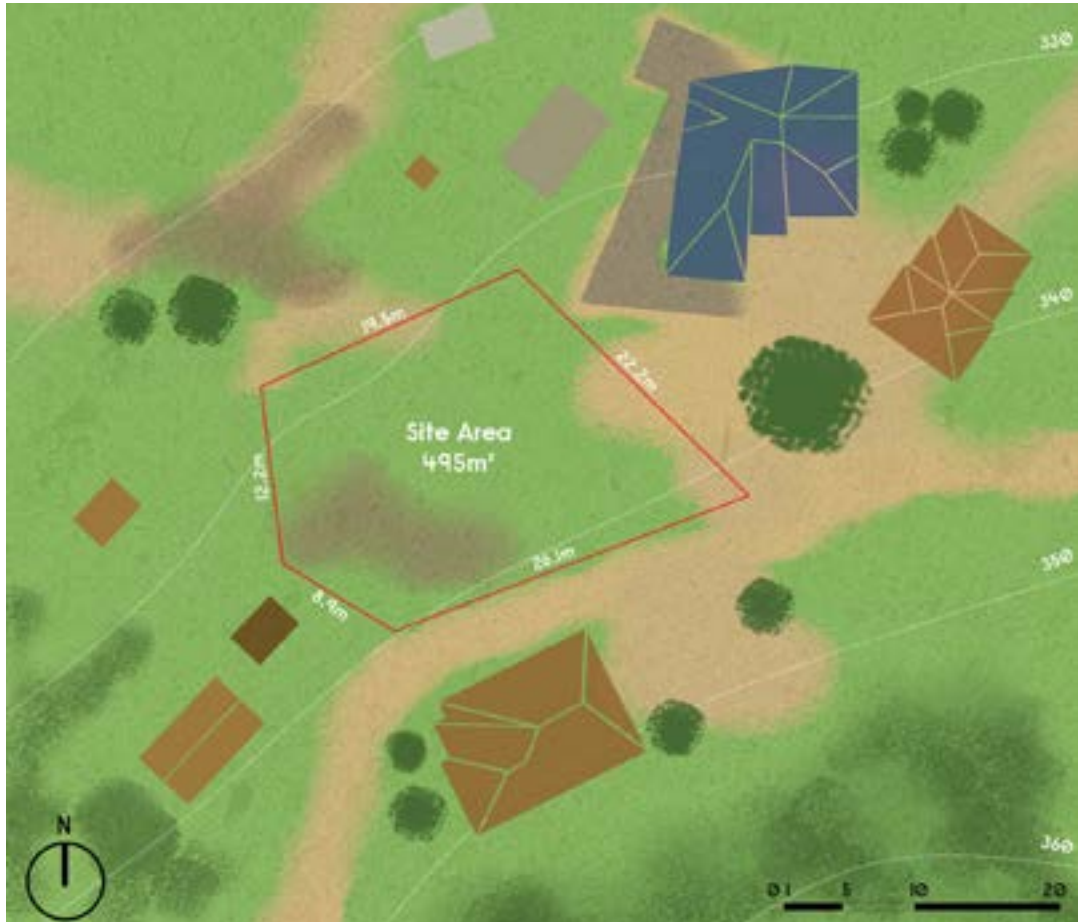
The vegetation is low-lying and sparse, with some mature trees within the surrounding area associated with residential compounds and dwellings. Large rocks can be found underfoot that contribute to the ground cover which is mostly loose earth.

The site would benefit from a scheme that integrates the access road, the extent of the plot and the view beyond whilst maintaining access to surrounding dwellings and private property.

An articulation of a landscape strategy within the proposal could communicate your intentions for the site and its thresholds and boundaries.

The range of materials within the site's context is vast and eclectic suggesting an array of uses and the demographic of users that they serve.

THE SITE



SITE AREA 495sqm | 0.0495H | 5328sqft

TOPOGRAPHY

The development plot sits on a hillside location with natural surveillance overlooking neighboring settlements. The surrounding area can be categorised by chalky hillside soil interspersed with lush green vegetation. We encourage proposals that acknowledge the topography and respond to it.

MATERIALS

The site is in view of neighboring settlements and make-shift temporary buildings.

ACCESSIBILITY

The plot is accessed by a small road called Smith Drive that runs off the main road (Leceister Street). Smith Drive is adequate for vehicular access from the main road for the drop off of materials or transport.

BUILDING PROGRAM

The objective of the competition is to design a space for the WYCF organisation. The program requirements are listed below and we have suggested that they are organised over a maximum of 3 floors.

GROUND FLOOR

Parking space for operational vehicles/visitors
Storage space for materials.

FIRST FLOOR

5 office spaces for key members of the WYCF team:-
Program Director's Office room – with a toilet.
Program Office room
Social Workers Office room
MEAL officer's office room.
Finance and admin office room
Male and female toilets
Common kitchen

★ Monitoring, Evaluation Accountability and Learning

SECOND FLOOR

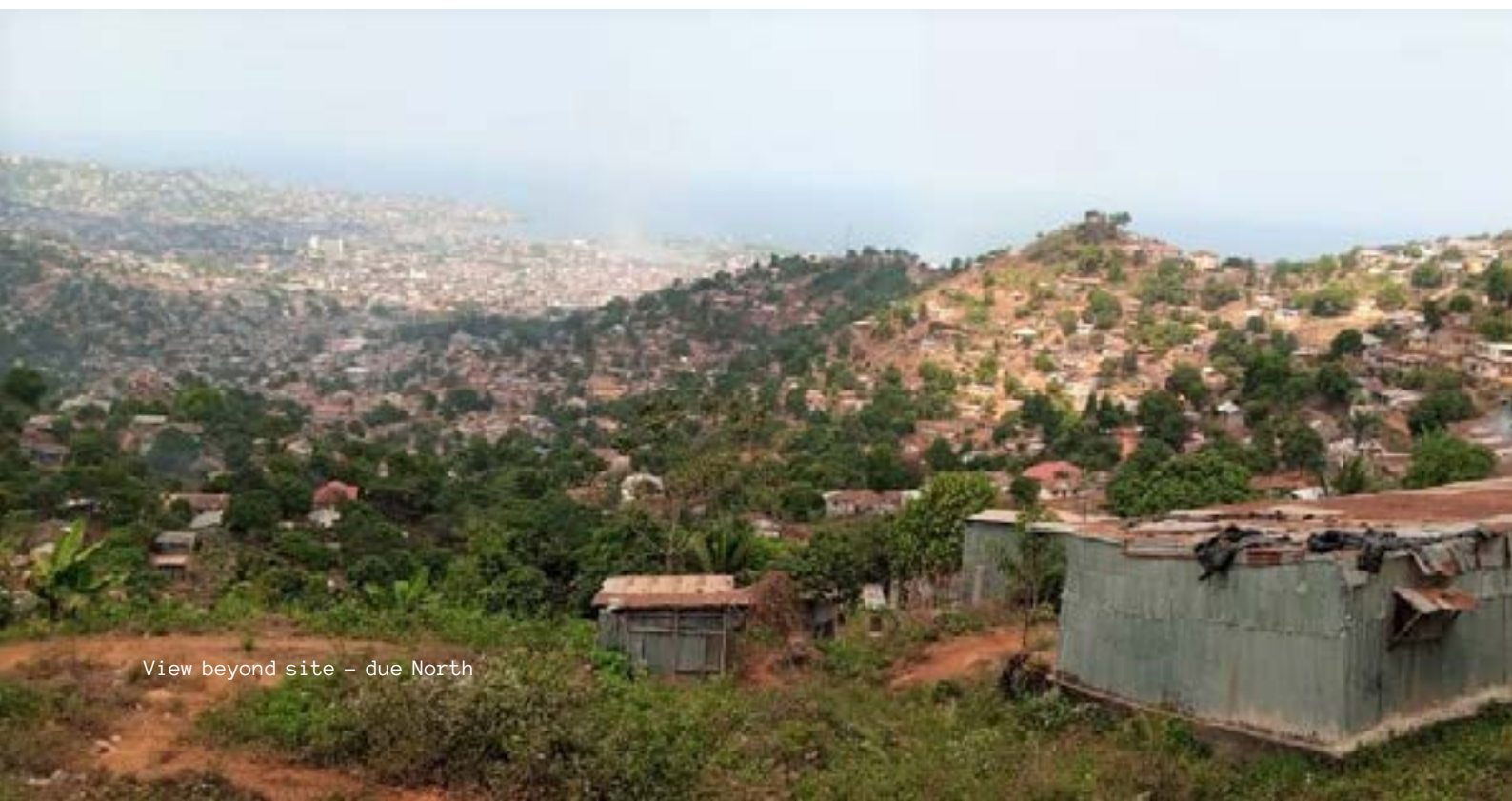
To include identical functions as the first floor. The purpose of this is to be rental space for another organisation to occupy as a source of income.

THIRD FLOOR

Low cost accommodation for volunteers during their stay in Freetown.

5 Rooms with en suite shower facilities.
A common area to include a kitchen, dining room (sufficient for group meals) and a living area.

Note: these are the minimum program requirements, We encourage proposals to think about spaces around the building that can encourage interaction with the community and over all enjoyable space for the volunteers and the team members. We are also open to how the program's are separated over levels.



View beyond site – due North

CONSIDERATIONS

CLIMATE

Sierra Leone experiences a sub Saharan tropical climate. It is a two seasonal region with the dry season between Dec- April and the rainy season between May to November.

Conditions are generally hot and humid. Mean monthly temperatures range from the upper 70s F (mid-20s C) to the low 80s F (upper 20s C) in low-lying coastal areas; inland they may range from the low to mid-70s F (low 20s C) to the low 80s F.

Precipitation is greater on the coast than inland; the Peninsula Mountains receive more than 200 inches (5,000 mm) annually, while the northeast receives about 80 inches (2,000 mm) a year.

In recent years, mass deforestation and construction on wet lands and foot hills have triggered unstable debris and soil resulting in mudslides.

Even though some go unreported, flooding is known to have affected agriculture and habitats of people in Sierra Leone and their suffering aggravated by the attending health problems of water-borne diseases (typhoid dysentery cholera and diarrhea) due to lack of safe drinking water.

ENVIRONMENT

We strongly believe that environmental impact must be considered for the development of the WYCF space, especially due to its location on the hillside.

Due to rapid population growth and increase of deforestation for development of the hillside, soil erosion and mudslides have been a pressing problem through the increase of surface water runoff.

We would like this issue to be addressed in two-folds. One being, an appropriate approach to construction on the hillside and second being a strategy to educate inhabitants around the site to rehabilitate the soil through planting.

A holistic landslide and floodrisk management should be introduced, through forestry/planting to help stabilise the slopes and reduce runoff that leads to flooding.



MATERIALS & CONSTRUCTION

As the winning proposal will be built, it is crucial that participants adapt to using local materials, easy constructive systems and energetic technologies in order to make proposals as realistic and efficient as possible.

Participants are encouraged to think about improving the constructive systems and bringing new ideas, while considering that the resources and financial capacity of the project are limited. Participants must consider the affordability and achievability of any new material.

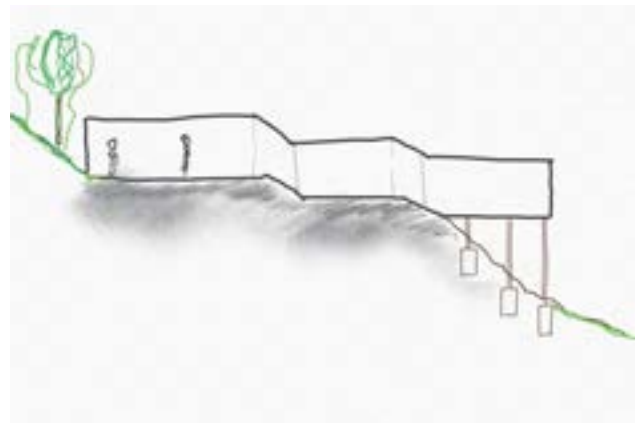
Deforestation on the hill side of Freetown has become an important environmental issue in the recent years. With flooding and mudslide events becoming a frequent occurrence during the monsoon months, it is important to incorporate strategies to mitigate the risks.

We encourage research and implementation of appropriate solutions for constructing on slopes. You will need to consider water run off from the site and incorporate measures to deal with surface water.

BUDGET

We would like applicants to consider the affordability of their proposals. As a secondary submission requirement, applicants must submit an excel document listing the materials and quantities required in their design.

We will be providing you with a list of locally available materials and the predicted cost allocation of the project.



AWARDS

1ST PLACE

£ Monetary Prize*
+
Construction of Design
+
Publication online + Certification

2ND PLACE

£ Monetary Prize*
+
All 3 3D Model Packs (Archi Hacks)
Isometric Diagrams Masterclass (Upstairs)
Post Digital Collage Course + Classical Human
Cutouts (Show it Better)
1-1 Clarity and Confidence program + 1 year of
ARCHLOGGERS Membership (ARCHLOGBOOK)
Unlimited access to :scale's Notion templates for
each team member (:scale)
+
Publication + Certification

3RD PLACE

£ Monetary Prize*
+
A Mega Upstairs Pack (Upstairs)
Post Digital Collage Course (Show it Better)
Free 6 months of ARCHLOGGERS Membership
(ARCHLOGBOOK)
'Ultimate Archi Student Hub' template (:scale)
+
Publication + Certification

SHORTLISTED ENTRIES

Publication online + Certification

*value dependant on number of applicants

SPONSORS



ARCHI
HACKS

show it
better. :scale

LEARN
UPSTAIRS

COMPETITION SCHEDULE

COMPETITION LAUNCHED

LAUNCHED AT MADCON

19TH FEBRUARY 2021

EARLY REGISTRATION

EARLY REGISTRATION ENDS

19TH FEBRUARY 2021

15TH MAY 2021

STANDARD REGISTRATION

STANDARD REGISTRATION ENDS

16TH MAY 2021

15TH AUGUST 2021

SUBMISSION DEADLINE

16TH AUGUST 2021

SHORTLIST ANNOUNCED

1ST OCTOBER 2021

WINNERS ANNOUNCED

22ND OCTOBER 2021

CONSTRUCTION

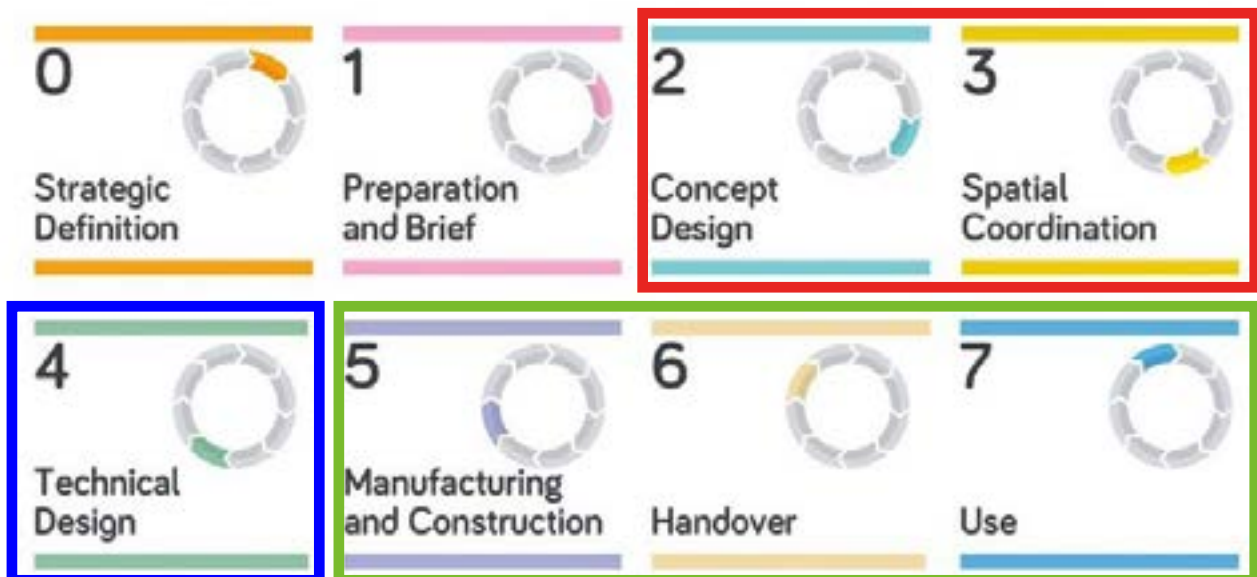
2022



RIBA WORK STAGES

COMPETITION STAGE

Your design falls within work stage 2 and 3.



WORKING WITH A+C TEAM

The winning team will work with A+C stages 3 and 4 to develop the design to construction standard and ensure client requirements are met.

CONSTRUCTION IN 2022

COMPETITION DETAILS

REGISTRATION

To register, please visit:

www.artsandcreativesltd.com/wycfspace

The Arts & Creatives team will send a confirmation email within 24 hours after registration and payment, which will include the site plan(dwg), site photos, available materials and your registration number.

PAYMENT

Early entry: Students £20

Non- students £40.

Standard entry: Students £30

Professionals £50.

ELIGIBILITY

This competition is open to students, professionals or anyone interested in participating.

No professional qualification is required.

Teams must be no more than 4 people. Individuals (1) may also enter.

Participants must be proficient in English and all entries must be submitted in English.

SUBMISSION REQUIREMENTS

Two A1 boards (portrait or landscape orientation).

All information must be provided in English.

JPEG format (.jpg). Smaller than 5mb per image

All files must be named as follows:

REGNUMBER_1.jpg and REGNUMBER_2.jpg.

Must include but not limited to:

- Site plan
- Ground floor plan
- Section & elevation/s
- 2 x Renders
- Excel sheet with specification of material types and approx quantities

No participant names, organisations, logos or information that reveal the team/team member's identity should be on submission materials. Your registration number must be placed on the top right hand corner of the team's competition board.

Submissions must be uploaded via the link provided by email before the submission deadline.

EVALUATION CRITERIA

The jury will evaluate the projects based on the following objectives:

BE EASILY CONCEIVABLE WITH BASIC CONSTRUCTION SKILLS AND TECHNOLOGY.

BE COST EFFECTIVE.

BE SUSTAINABLE AND CONSIDER THE IMPACT OF DEFORESTATION ON THE HILLSIDE.

RESPOND TO SPATIAL AND PROGRAM REQUIREMENTS.

CONSIDER THE COMFORT AND EXPERIENCE OF THE VOLUNTEERS DURING THEIR STAY IN THE BUILDING.

COMPETITION DETAILS

THE CONSTRUCTION

We Yone Child Foundation (WYCF) is the organisation in charge of the project. The winning proposal will work closely with the Arts and Creatives team to develop the design in order to ensure buildability and responds to all site and client requirements

Arts and Creatives will not be held responsible if WYCF decides not to proceed with the build.

COPYRIGHT

All materials submitted to the competition will become property of Arts and Creatives (A+C), and therefore give A+C all associated rights.

Published materials will be attributed to the appropriate author.

A + C reserves the right to modify the proposals and text in order to better adapt them to any publication format, without changing the essence of the proposal itself.

A+C reserves the right to alter the winning proposal during the 'developed design stage' to respond to site constraints and client requirements.

Participants are responsible for using copyright-free images. A+C will not be held responsible for the use of protected images.

QUESTIONS?

All questions/ queries regarding the competition should be sent to designscompetitions@gmail.com



ABOUT ARTS + CREATIVES



ARTS & CREATIVES (A+C)

Arts and Creatives Designs (A+C) are a group of freelance designers and architects based in the UK. We are a young team with a variety of skills and experience. The team offer architectural services but are also extremely pro-active in design competitions and creative community projects.

We pride ourselves on our ability to tackle any challenge with a non-hierarchical approach to design that shares the experience of our professionals with up-and-coming designers to push the boundaries and promote self-development.

Our productivity is not limited by geography and our members are able to work remotely and communicate effectively from several international locations. We have built a tight-knit team and virtual studio culture that has expanded significantly in the last 6 months and within the most pressing months of the pandemic.

We continue to operate within a range of capacities; participants, hosts, collaborators. We design competitively, share knowledge where possible, provide opportunities for other professionals and students.

WYCF Space Design Competition is the latest manifestation of our growing ambitions. We welcome you to take part and watch this space..