



Sea2City DESIGN CHALLENGE

**RISE
TO
THE
CHALLENGE**



Embraced by water, the City of Vancouver has always been a coastal community defined by its proximity to the ocean, river and mountains. Vancouver recognizes the need to plan for future sea level rise and to help vulnerable neighbourhoods to become more resilient to current and future coastal flooding.

The City is launching the Sea2City Design Challenge (Sea2City) to help inform a framework and vision to guide urban development and ecological revitalization in Vancouver's False Creek floodplain, a highly valued and constrained urban waterway in the heart of the city. The innovative and exciting design challenge will engage two multidisciplinary teams to work co-operatively with the City of Vancouver and project partners to:

- Explore coastal adaptation approaches that respond to the social equity, economic, and ecological challenges posed by sea level rise and coastal flooding.
- Investigate coastal adaptation approaches for sea level rise beyond 1 metre.
- Expand the City's toolbox of coastal flood management approaches.
- Increase public awareness of climate change and sea level rise.

Sea2City will include a creative and interactive public engagement and communications program managed by the City of Vancouver. Design teams will participate in three rounds of events and activities including public learning and design events and advisory sessions and workshops with groups established for the project. Two participating design teams will be selected through a competitive application process to:

- Provide a comprehensive design package for a preferred conceptual coastal flood management approach for two sites in False Creek (each Design team will be responsible for two sites).
- Provide illustrative concepts showing where future coastal flood management approaches and/or structures could be developed along the currently unprotected portions of the False Creek shoreline.
- Participate in 1-day, inter-team design charrette at the conclusion of the Sea2City to apply lessons learned through the challenge process to a fifth site.
- Produce a final set of materials designed to inspire and inform the community and the City.

The Sea2City challenge sites represent the varied land use typologies found in False Creek along with a range of coastal flood management constraints and opportunities. The sites include high density mixed-use neighbourhoods, mixed-use local commercial areas, and valued parks and public spaces.

Participating teams will be guided by the design principles developed through the 2021 False Creek Coastal Adaptation Plan, while evaluation of the concept designs will be directed by shared community values that were identified in the same project. Sea2City will also include additional guidance and input from xʷməθkʷəy̓əm (Musqueam), Skwxwú7mesh (Squamish), and səliwətaʔ (Tsleil-Waututh) Nations on whose unceded, ancestral, traditional territories Vancouver and False Creek is located.



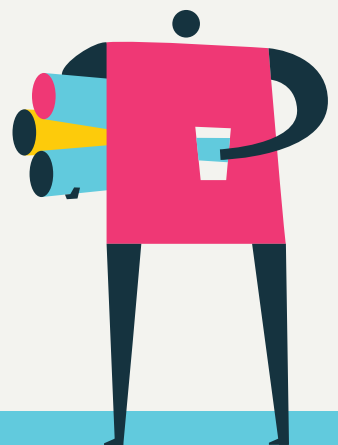
DETAILS

As a City of Vancouver project, the Sea2City Design Challenge application will go through a Request for Proposals (RFP) process. The RFP is available for submissions until July 13, 2021 at:

<https://bids.vancouver.ca/bidopp/openbid.htm>

The amount budgeted for the professional fees for Sea2City is between \$175,000 and \$225,000 per team. Total fees include all applicable taxes and expenses, including travel.

The City of Vancouver will support non-monetary benefits through a project marketing and communications program, including a dedicated project website, dedicated social media accounts, and regular project press releases to major national and international media outlets.



MORE INFORMATION

Contact us: sealevelrise@vancouver.ca

Visit vancouver.ca/sea2city to download a copy of the Challenge Outline or for more information on sea level rise in False Creek.